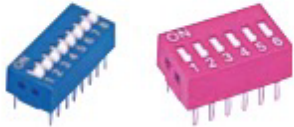


Switch Brochure



RS_RSR



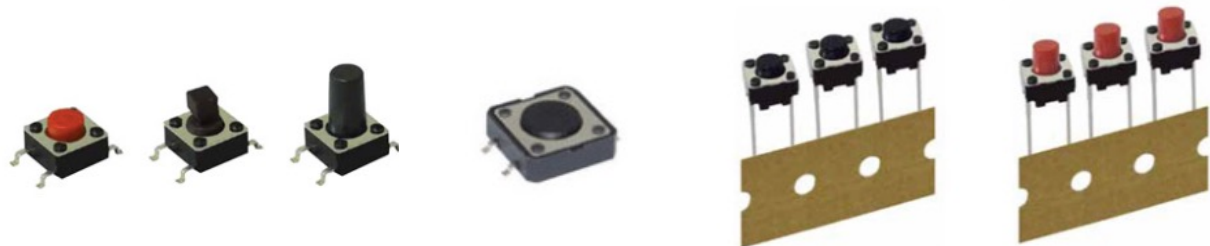
MP12-LED-C



SQUARE TYPE TACT SWITCH

SERIES: TSS, TSA, TSX, TSP, TST, TSQ, TS6C

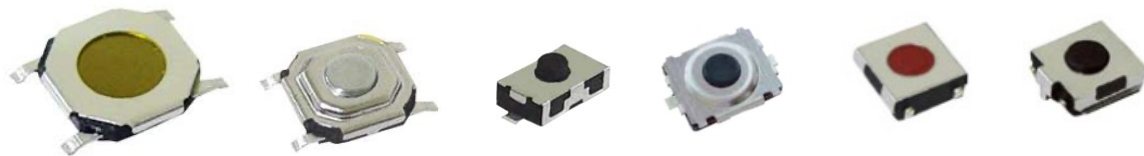
- With all general-size from 4.5 (W)*4.5(L) to 12.0(W)*12.0(L)
- Current Rating : DC 12V, 50mA
- Insulation Resistance 100M Ohm/100V DC
- Optional operating force for 100 (gf) / 160 (gf) / 260(gf)
- Durable operating life : 100, 000 cycles (TSX: 50,000 cycles)
- Optional long-life version for ONE Million cycle life (TSS, TSA, TSP)
- Optional for Lead-Free or Halogen-Free
- Optional for stem color or stem shape (TSS, TSA, TSQ)
- Supports of terminal changed (TSX, TSQ, TS6C)
- Radial Tapping type: TST
- Optional package for BULK / REEL
- DIP only: TSA, TSP, TST
- Application: Audio device, office device, communication device, TV, and automotive device, Garage door remote control 、 Coffee machine 、 Endoscopy 、 electric cooker



DUSTPROOF TYPE TACT SWITCH

SERIES:TSL, TSZ, TSO, TSSZS, TSK, TSSK, TSYY, TSYS

- With all general-size from 3.35(W)*3.35 (L) to 6.2(W)*6.2(L)
- Current Rating DC 12V, 50mA
- Insulation Resistance 100M Ohm/100V DC
- Optional Operating force for 70(gf) / 400(gf) (based on each definition)
- Operating life : 50,000 /100,000 cycles (based on each definition)
- Optional long-life version for ONE Million cycle life. (TSL, TSZ, TSK, TSSK)
- Rubber stem Type : TSO
- Miniature type : TSSZS, TSSSK
- Optional for GND terminal (TSL , TSZ, TSSZS)
- Optional for terminal shape (TSSK excepted)
- Optional for stem color / material (TSL, TSZ, TSSZS, TSK)
- Optional package for BULK / REEL
- Optional for Lead-Free / Halogen-Free
- Application: audio device, mouse, BT speaker, office device, communication device, TV, and automotive device.



MINI & DUSTPROOF TACT SWITCH SERIES: TSI ,PD

- With all general-size from 1.95(W)*2.8(L) to 3.7(W)*3.7(L)
- Current Rating : DC 12V, 50mA
- Insulation Resistance 100M Ohm/100V DC
- Optional Operating Force for 100(gf) /160 (gf) /260(gf) (TSI)
- Optional Operating Force for 180 (gf) or 250(gf) (PD)
- Operating life : 100, 000/500,000 cycles (TSI)
- Operating life : 300, 000/500,000 cycles (PD)
- Optional long-life version for ONE Million cycle life.
- Optional package for BULK/ REEL
- Supports of Lead-Free / Halogen-Free
- Application: drive-by-wire headset, function key of notebook



RETANGLE SHAPE TACT SWITCH SERIES: TSH , TSU, TSCA, TSJA

- With all general-size from 3.0(W)*3.5(L) to 4.3(W)*6.0(L)
- Current Rating: DC 12V, 50mA
- Insulation Resistance 100M Ohm/100V DC
- Optional Operating Force for 160 (gf) / 260(gf)
- Operating life : 30, 000 cycles (TSH)
- Operating life : 50, 000 cycles (TSU)
- Operating life : 50, 000 cycles /10,000(TSCA)
- Operating life : 100,000(TSJA)
- Optional for stem color or stem material (TSH, TSU)
- Optional for terminal changed
- GND terminal type: TSU
- Supports for Lead-Free / Halogen-Free
- Optional package for Bulk / Reel.
- Application: remote control for garage door, electric toothbrush, TV, VCR, office equipment, communication apparatus.



VERTICAL TACT SWITCH

SERIES: TS4V, TSV, TSD, TSD1D, TSH-V, TSSH-VS, TSSH-V, TS11, TSCF, TSQE, TSQF

- With all general-size from 2.5(W)*3.0(L) to 6.0(W)*8.4 (L)
- Current Rating DC 12V, 50mA
- Insulation Resistance 100M Ohm/100V DC
- Operating Force of 100(gf) / 160 (gf) / 260(gf) (TSV, TSD)
- Operating Force of 160 (gf) / 260(gf)
- Operating Force of 160 (gf) (TS11)
- Optional for GND terminal (TS4V,TSV-S)
- Supports Operating life : 30, 000 /50,000/ 100,000 cycles (refer to each of datasheet)
- Optional long-life version for 1-Million cycle life. (TSV)
- Optional for Lead-Free / Halogen-Free
- Optional package for Bulk / Reel.
- DIP type only : TSD, TSD1D
- Application: Portable device, audio device, office device, communication device, TV, and automotive device.



WATERPROOF TACT SWITCH **SERIES: TSW, TSDY**

- With all general-size from 6.2(W)*6.2(L) to 10.0(W)*10.0 (L)
- Current rating : DC 12V, 50mA
- Insulation Resistance 100M Ohm/100V DC
- Operating Force for 100(gf) / 160 (gf) / 260(gf) / 400(gf) (based on each optional definition)
- Through Hole only.
- Radial Tapping type: TSWDF
- Supports Operating life : 50,000/ 100,000 cycles (based on each definition)
- Support for Lead-Free / Halogen-Free
- Optional package for Bulk or Tray or BOX.
- Application: various electric device that required with waterproof feature, washing machine.



LED PUSH SWITCH & PUSH SWITCH

LED PUSH SW SERIES: LP6, LPE, LP12, LTS, LPD

PUSH SW SERIES: HSP, PS-22F02, PS-22F02A, PS-22F02B

- With all general-size from 4.1(W)*6.8(L) to 12.0(W)*12.0 (L)
- Current rating : DC 12V 50mA : LP6; LPE, LPD,
- Current rating: DC 30V 200mA: LP12 , HSP
- Current rating: DC 30V 100mA: LTS
- Current rating: DC 12V 2mA : PS22F02, PS22F02A, PS22F02B
- Optional Operating Force for 100(gf) / 400(gf) (base on each optional definitions)
- Through Hole only (LPD excepted)
- Supports operating life : 50,000/ 100,000 cycles (based on each definition)
- Supports operating life: 5 million (LTS)
- Optional for cap color : (LTS)
- Optional for LED umbers, colors and lighting-sequence (LP6 , LPE, LP12)
- Optional for Lead-Free or Halogen-Free
- Optional package for Bulk / Tray
- Application: various electric device, testing facilities, communication device.



ROTARY SWITCH SERIES:RSM



- With all general-size from 10.0(W)*10.0(L)*6.8(H)
- Switching current rating: DC 50V 100mA ; Non-Switching current rating:24V 25mA
- Operating Force : 500(gf)
- Supports for Operating life :2000 steps
- Optional for recessed actuator or raised actuator
- Optional for 10 positions / 16 positions
- Optional package for Tube or Reel
- Application: audio device , MP3/MP4 player



4 Directions & Press SWITCH SERIES:TS5B

- 7.4(W)*7.4(L)
- Current Rating: DC 12V 50mA : TS5B
- Operating Force : 4-direction 125(gf) , push 240(gf)
- Package: Bulk
- Application: MP3 、 Camera 、 TV 、 Remote control



Lever & Press SWITCH SERIES:LS3A , LS3B, LS3C, LS3D

- With all general-size from 8.15(W)*9.15(L) to 11.8(W)*12.0(L)
- Rating: DC 5V 10mA
- Operating Force (based on each definition) : lever 65(gf) to 80(gf) ; push 150(gf)to 200(gf)
- Package: Bulk
- Application:MP3 、 Camera 、 Bluetooth headset 、 TV



SLIDE SWITCH

SERIES:SK, SS, MS, MK

- With all general-size from 2.7(W)*6.8(L) to 7.5(W)*17.0(L)
- Current rating: DC 50V0.3A : SK , SS
- Current rating DC 6V0.3A : MS, MK
- Vertical type: SK, MK
- Operating Force (based on each definition) : from 150(gf) to 300(gf)
- Package : Bulk
- Application: Toys 、 Mouse 、 Bluetooth Device 、 Keyboard 、 Wearable device 、 Earphone



DIP SWITCH

SERIES:RM/RMR , RS/RSR, RA/RAR, RPL

- With all general-size from 6.2(W) to 12.2(L)
- Current rating DC 24V 25mA
- SMT : RM/RMR
- Recessed actuator type: RMR, RSR, RAR
- Vertical press : RPL
- Optional for short key or long key
- Support optional for 1 to 12 positions. (RPL : 1 to 10 positions)
- Optional for extra top seal
- Optional for color : RA, RAR, RPL
- Package : Bulk and Reel (RM/ RMR) , Bulk and Tube(RS/RSR, RA/RAR, RPL)
- Application: Remote control \ Industrial facilities control

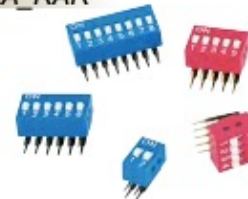
RM_RMR



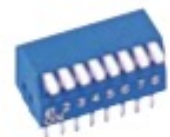
RS_RSR



RA_RAR



RPL



Micro / Snap SWITCH

SERIES:DM, SM ,VM, V3, SSM, SW

- With all general-size from 2,7(W)*8.2(L) to 25.4(W)*27.8(L)
- With operating speed 0.1mm-1m/s (1mm-500m/s : DM, SSM)
- With all range current ratings available from DC 5V, 100mA to AC 125V/250V 10A (based on each definition)
- Support operating life from 300,000 cycle life to 1 Million times cycle life (Mechanical) (Base on each definition)
- Support operating life from 6,000 cycle life to 1,1000 times cycle life (Electrical) (Base on each definition)
- Optional Operating Force for 100(gf) / 160 (gf) / 260(gf) / 400(gf) (Based on each optional definition)
- Optional for terminal coating (SSM exepted)
- Optional various actuator for actual application and optional differential terminal types for assembling.
- Optional operating temp for 105 Celsius /125 Celsius.
- Lead-Free Compliant
- Application: Vacuum cleaner 、 Water heater 、 Blender 、 Copying machines 、 Dehumidifier 、 Vending machines
Voting machine 、 Electric heater



ROCKER SWITCH/ DOOR LAMP SWITCH SERIES:HF606 , LR01

HF606 ROCKER SW

- With all general-size from 10.5(W)*15.5(L) to 15(W)*21(L)
- With all-range current rating available from AC 125V6A to AC 250V10A
- Operating life for 300,000 cycles (mechanical), 100,000 cycles (electrical)
- Optional for SPST/SPDT, housing color and actuator color, shape and mark.
- Optional for lamp volage.
- With UL, CUL , ENEC certification
- APPLICATION: Set-top box 、 Instrument 、 Router



LR01 DOOR LAMP SW

- With all general-size from 19.8(W)*21.7(L) to 20.7(W)*27.2(L)
- With all-range current rating available from AC 5A 125V/250V
- Operating life for 500,000 cycles (mechanical), 50,000 cycles (electrical)
- Optional for terminal coating, color of plastic housing and color of cover.
- With UL, CUL , ENEC certification.
- APPLICATION: Home Appliance and control , refrigerator



MENTAL INDICATOR, METAL METAL PUSH BUTTON SWITCH PASTIC PUSH BUTTON SWITCH & Metal Touch SWITCH

Metal Indicator

- With all general-size from OD 10mm to OD 25mm
- With all-range current rating available from AC 1.5V to AC 250V / lower than 20A
- Storage temp:-20°C to +85°C
- WATERPROOF: IP67
- CASE MATERIAL: : Nickel plated brass / stainless
- Optional for LED color (LED cycle-life: approx.40,000hrs /reference)
- With UL, CUL , ENEC certification
- APPLICATION: 3D printer 、 Audio control 、 Vending Machine 、 Oven 、 Bank alarm system 、 Medical equipment 、 Test equipment



MP6-LED



MP8-LED



MP12-LED-C



MP16-LED-A



MP16-LED-B

Metal Push Button Switch

- With all general-size from OD 8mm to OD 25mm
- With all-range current rating available from AC 24V1A to AC 250V5A
- Dielectric Strength: AC 2000V
- Storage temp:-20°C to 55°C
- WATERPROOF: IP40/ IP50 / IP65/ IP67 (Based on each definition)

- CASE MATERIAL: nickel plated brass / Stainless
- LED type : Ring /Dot / Character
- Optional for LED color (LED cycle-life: approx.40,000hrs /reference)
- Life cycle : 100,000 cycles to 500,000 cycles (mechanical) , 10,000 cycles to 50,000cycles (electrical)
- Actuating Force: 2-5N
- Operating type: Latching / Momentary
- With UL , CUL , ENEC certification
- APPLICATION: 3D printer 、 Audio control 、 Vending Machine 、 Oven 、 Bank alarm system 、 Medical equipment 、 Test equipment



Plastic Push Button Switch

- With all general-size from OD 14.2mm to OD 40mm
- With all-range voltage rating available from AC 1.8V-250V 5A /1.8V-360V 15A (base on each definition)
- Storage temp:-20°C to +55°C
- WATERPROOF: IP40 / IP65 (base on each definition)
- CASE MATERIAL: : Nylon PA66



- Life cycle : 100,000 cycles to 500,000 cycles (mechanical) , 10,000 cycles to 50,000cycles (electrical)
- Actuating Force: 10-35N
- Operating type: Latching / Momentary
- LED type : Rectangle / Square / Circle / Knob / Key
- Optional for LED color (LED cycle-life: approx.40,000hrs /reference)
- With UL, CUL , ENEC certification



Metal Touch Switch / Capacitive Touch

- Built-in Dimmer Switch Chip with Low-power consumption CMOS technology.
- With unique touch capacitive sensing algorithm.
- Supports POWER-ON reset and Low-voltage reset
- Operating type: stepless adjusted / step adjusted / Latching / momentary
- With excellent anti-radiated interference and resist-conduction
- With all general-size from OD 14.2mm to OD 40mm
- Operating Voltage: DC 6V-24V, 0-7A
- Storage temp: :-20°C to +70 C
- easy-installation for variety of surface material like metal, wood and ceramic.

